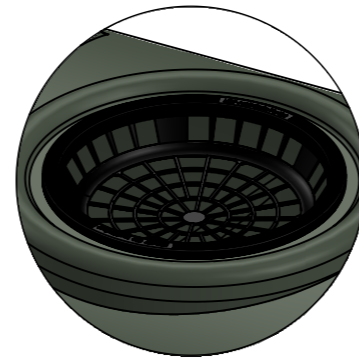
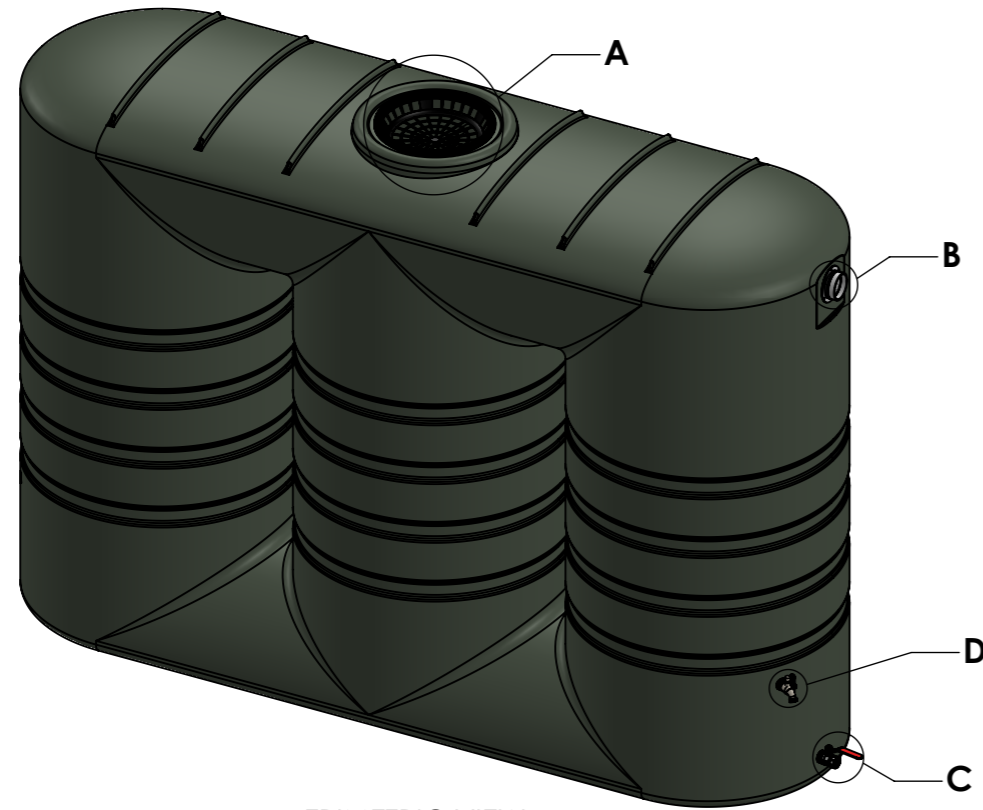
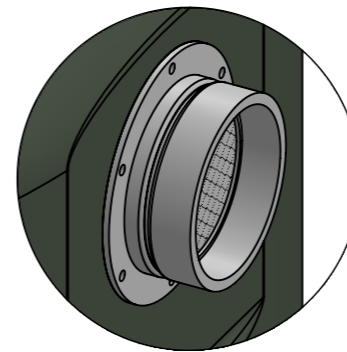


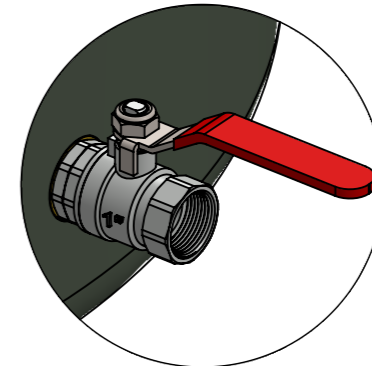
CALCULATED CAPACITY (L): 4,100 L



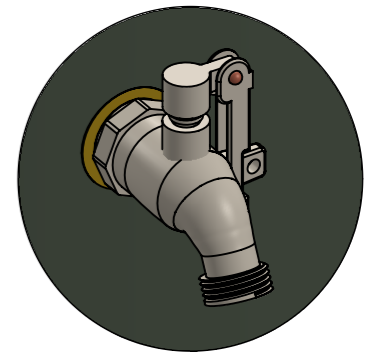
DETAIL A  
400MM LEAF  
STRAINER



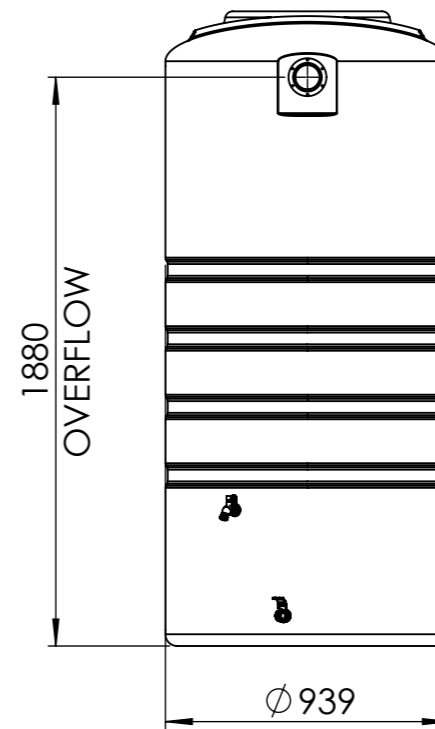
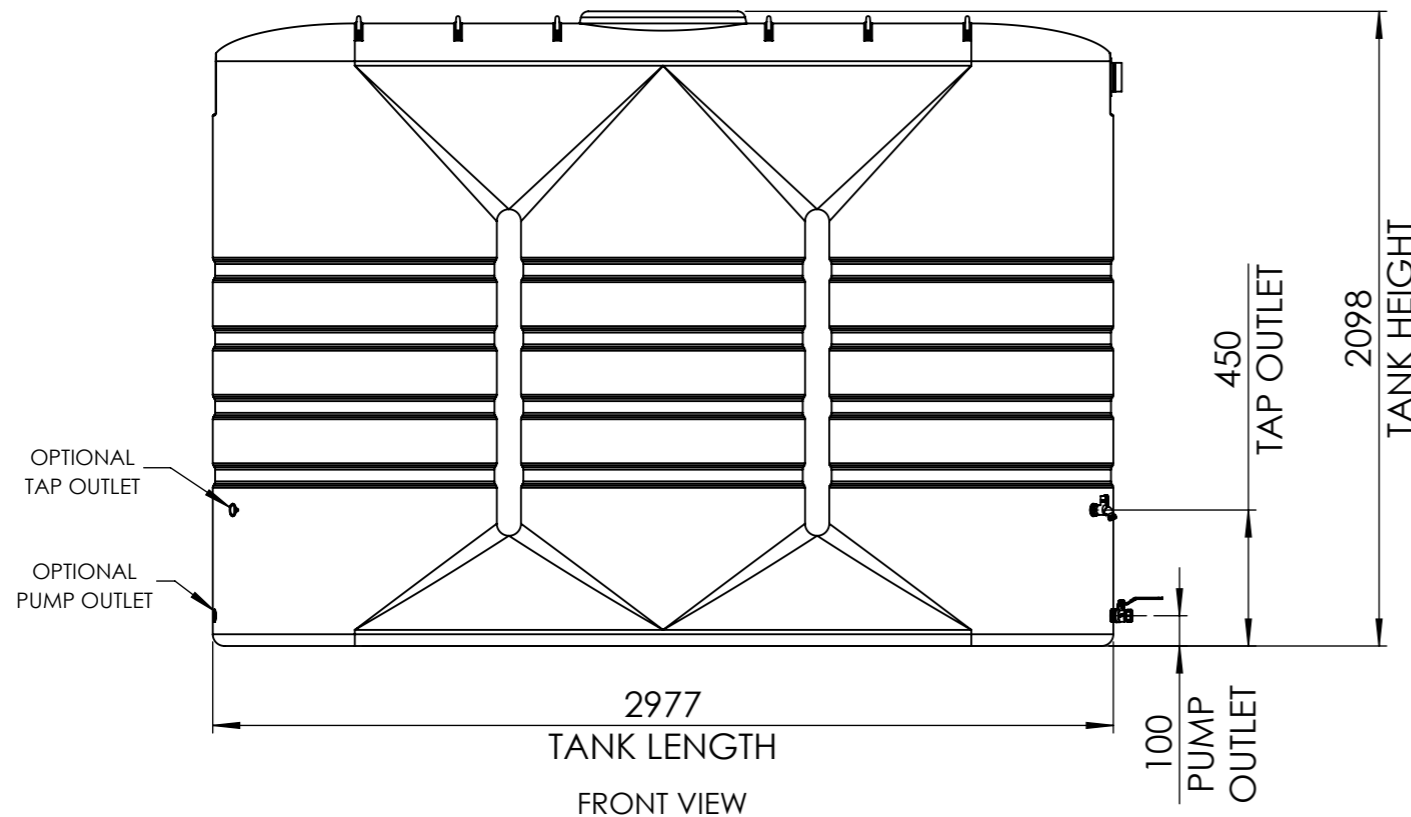
DETAIL B  
90MM HIGH  
LEVEL OVERFLOW  
KIT



DETAIL C  
25MM BRASS  
PUMP OUTLET  
AND BALL  
VALVE



DETAIL D  
ADD-ON  
25MM SIDE  
LOCKING TAP



NOTES:

- 1) CAPACITIES AND MEASUREMENTS ARE TESTED IN ACCORDANCE WITH AS4766, BUT MAY VARY UP TO +/- 3% DUE TO ROTO-MOULDING PROCESS.
- 2) REFER TO THE BUSHMANS INSTALLATION GUIDE FOR INSTALLATION INFORMATION.
- 3) 300MM FLEXIBLE CONNECTION ADD-ON AVAILABLE FOR PUMP. ADVISE YOUR BUSHMANS REPRESENTATIVE.
- 4) PUMP AND TAP OUTLETS CAN BE FITTED TO PREFERRED POSITION AT TIME OF DELIVERY. ADVISE YOUR BUSHMANS DRIVER.
- 5) DESIGN BASED ON AS/NZS 4766:2006 DESIGN VALIDATION REPORT EVOCO-VR-0252. MAX CAPACITY, AS SPECIFIED IN EVOCO-VR-0252, TO BE 1930MM.

BUSHMANS GROUP PTY LTD 70 PITT ST, SYDNEY NSW 2000				DO NOT SCALE DRAWING		DIMENSIONS ARE IN MILLIMETERS	
				TITLE:		4,000L SLIMLINE RAINWATER TANK GENERAL ARRANGEMENT FOR TSL880 V001 TANK	
DWG NO.				BPP101A			
DRAWN		S.PAPA		SIGNATURE		DATE	
CHK'D		S.NAGY				15/09/2025	
APPV'D		S.NAGY				15/09/2025	
MFG						SCALE:1:25	
Q.A						PRONTO CODE: TSL880	
						MATERIAL: LLDPE	
						REVISION 1	
						A3	
						SHEET 1 OF 1	