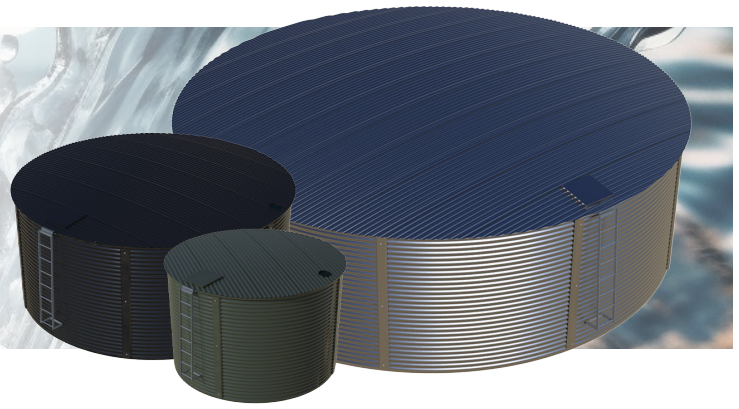


# Aqualine

STEEL TANKS

By **Bushmans**



## Maintenance Guide

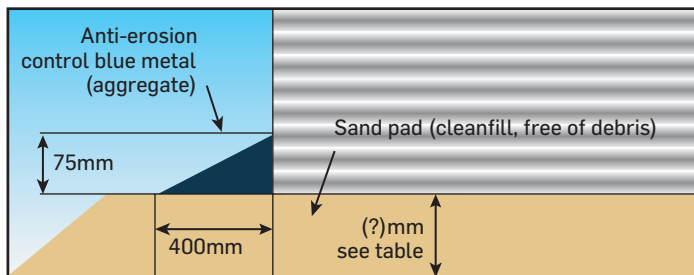
To help our valued customers maintain their Aqualine tank, Bushmans has developed this checklist to support long-term performance, water quality, and warranty compliance.

### WATER IN THE TANK

If the tank becomes empty, strong wind may move or distort the tank. This can cause damage when the tank refills. Water inside the tank also holds it in place during high winds.

Important: Add a minimum of 300mm of water straight after installation.

Maintain at least 300mm of water in the tank at all times to ensure stability.



### PROTECT THE BASE

Bushmans will only install tanks on a correctly prepared base. It is essential that this standard is maintained over the life of the tank to avoid structural failure.

Check the base monthly for signs of:

- Erosion or wash-away
- Digging by animals (rabbits, rats, wombats, etc.)
- Tree root intrusion
- Any damage or deterioration may render the tank inoperable and void your warranty.



### WATER QUALITY

Maintaining water quality starts with clean catchment:

- Remove leaves and debris from nearby gutters and overhanging branches

- Install gutter guard and first flush diverters

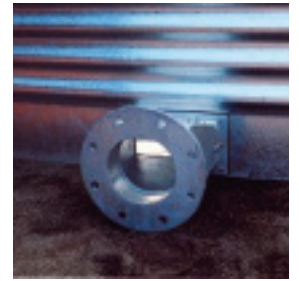
- Regularly clean the tank strainer basket and leaf eater

- Check the access hatch is securely closed to keep out birds/vermin

### FITTINGS

Regularly inspect fittings to ensure they are:

- Tight and leak-free (Be careful not to twist the liner when tightening)



- Undamaged and not bent or bumped out of alignment

### MONTHLY CHECK

- Check the aggregate ring around the base for vegetation growth

- Vegetation can cause movement in the liner and walls, which can damage the tank and void your warranty.

### QUARTERLY CHECK (Every 3 Months)

- Inspect and clean the overflow screen – clear out any leaves or blockages

- Check the inlet/leaf strainer – ensure it is clean and free of debris

### WARRANTY

Maintaining your tank isn't just about performance – it's also a requirement for your warranty.

Keeping the base clear, ensuring overflow is plumbed away, and conducting regular maintenance will help avoid issues and extend the life of your tank.

For more information, contact your local Bushmans representative or visit [www.bushmantanks.com.au](http://www.bushmantanks.com.au).

**To ensure your Aqualine tank is covered under warranty, it is essential that you register your warranty online.** Failure to complete the online registration may result in your warranty being void. To register, simply scan the QR code below or visit:



[www.bushmantanks.com.au/bushmans-aqualine-warranty-register](http://www.bushmantanks.com.au/bushmans-aqualine-warranty-register)